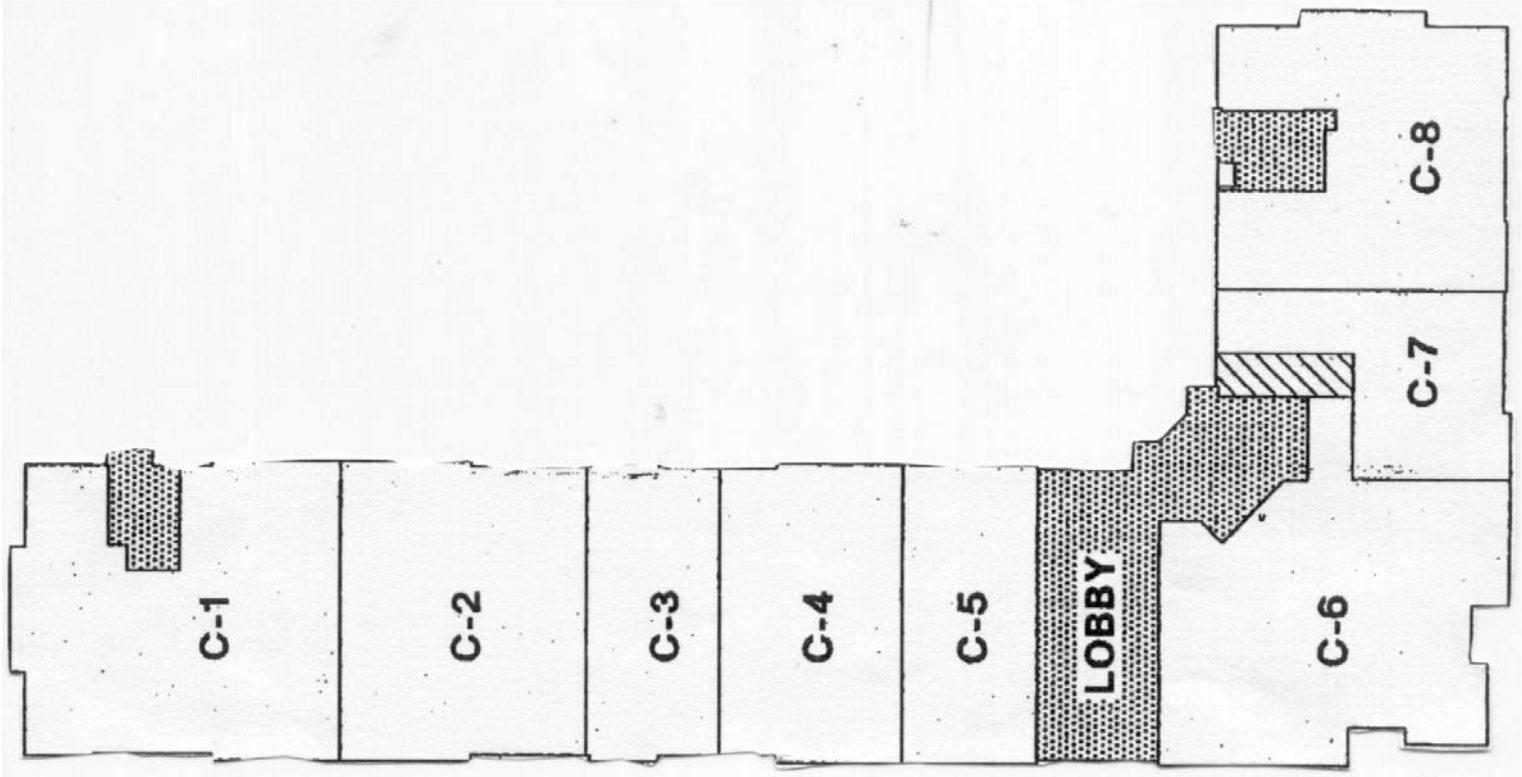
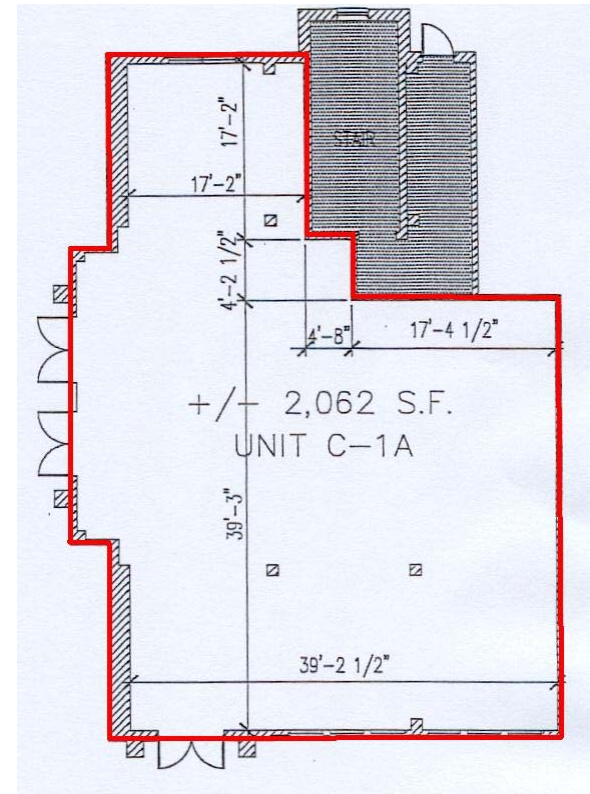




Foundation Square

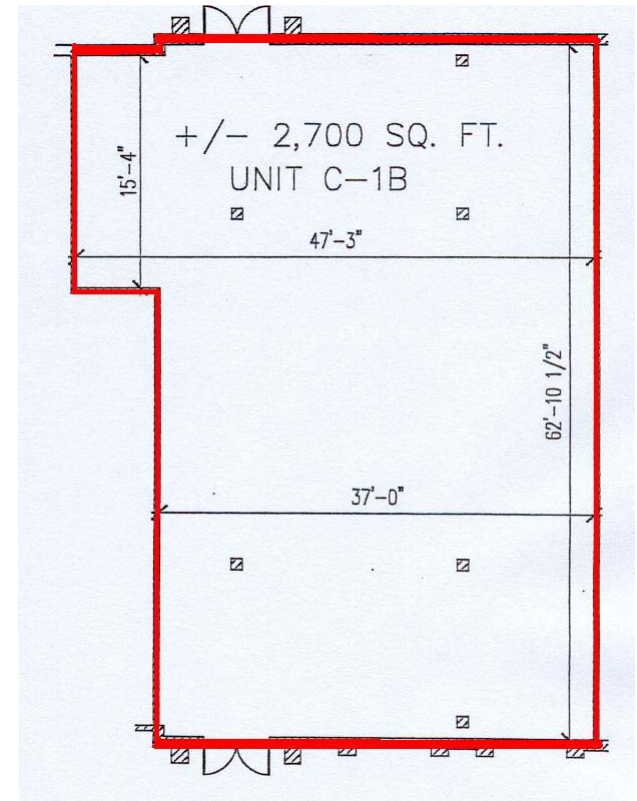


Foundation Square
5590 Foundation Street
Space C-1A



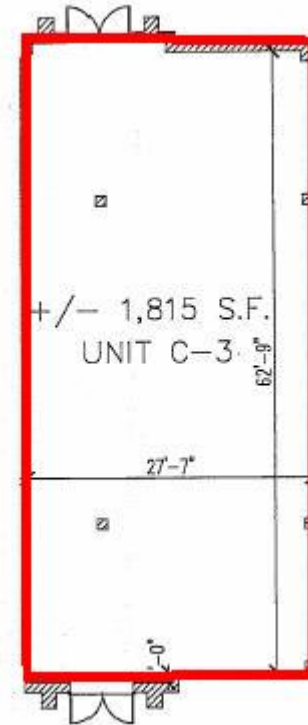
*Space C-1A and C-1B can be combined for a total of 4,762 Square Feet

Foundation Square
5580 Foundation Street
Space C-1B



*Space C-1A and C-1B can be combined for a total of 4,762 Square Feet

*Foundation Square
5540 Foundation Street
Space C-3*



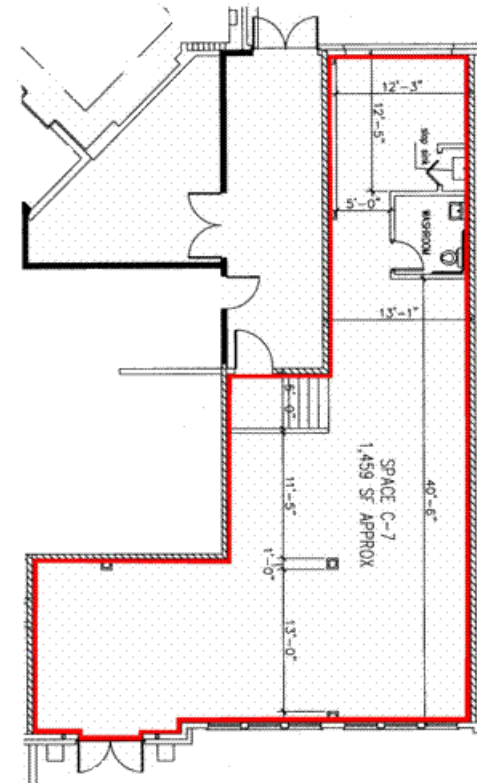
In addition to the base specifications, C-3 has the following:

Both front and rear doors open to the public. 11 Foot+ Ceilings, 2 ADA approved bathrooms, with fixtures, paint, and vinyl flooring, Upgraded electrical panel to 200 amp.

Foundation Square, A Condominium
Unit C-3
5540 Foundation Street
Commercial Space Base Specifications

- Exterior Doors Metal-clad or fiberglass with insulated glazed panels and transoms
- Windows To match exterior doors, except a fixed panel, with insulated glazed panels.
- Door Hardware Commercial grade hardware with panic features where required by building code. Provided in satin nickel finish.
- Floor Eleven inch concrete slab with penetration sleeves for proper locations for plumbing, electrical and HVAC.
- Upper Ceiling Gypsum drywall (5/8") suspended ceiling fire assembly on a 2' X 4' grid.
- Finished Ceiling Acoustical ceiling (2' X 4' panels) installed in a suspended metal grid.
- Lighting 2' X 4' fluorescent 4-tube fixtures installed at approximately one fixture per 150 square feet. Three-way switch at front and back doors.
- Electrical 100 amp service panel.
- Walls Finished drywall doors and windows to be trimmed.
- Plumbing One bathroom to be provided.
- HVAC Minimum installation for open space utilizing approximately 3 tons capacity per 1,000 square

*Foundation Square
4309 New Town Avenue
Space C-7*



In addition to the base specifications, C-7 has the following:

Space has been painted and the doors and windows have been trimmed. Bathroom has a tile floor, custom counter, mirror, vanity light, and exhaust fan. Water Heater, 15 electrical receptacles. Two awnings to be provided by the landlord.

Foundation Square, A Condominium
Unit C-7
4309 New Town Avenue
Commercial Space Base Specifications

- Exterior Doors Metal-clad or fiberglass with insulated glazed panels and transoms
- Windows To match exterior doors, except a fixed panel, with insulated glazed panels.
- Door Hardware Commercial grade hardware with panic features where required by building code. Provided in satin nickel finish.
- Floor Eleven inch concrete slab with penetration sleeves for proper locations for plumbing, electrical and HVAC.
- Upper Ceiling Gypsum drywall (5/8") suspended ceiling fire assembly on a 2' X 4' grid.
- Finished Ceiling Acoustical ceiling (2' X 4' panels) installed in a suspended metal grid.
- Lighting 2' X 4' fluorescent 4-tube fixtures installed at approximately one fixture per 150 square feet. Three-way switch at front and back doors.
- Electrical 100 amp service panel.
- Walls Finished drywall doors and windows to be trimmed.
- Plumbing One bathroom to be provided.
- HVAC Minimum installation for open space utilizing approximately 3 tons capacity per 1,000 square

Marketed by Twiddy Realty. Please contact Amy McCarthy at 757-784-2404
4808 Courthouse Street, Suite 104, New Town
Williamsburg, VA 23188

